

I INVEST IN **SPB**



Investment advantages of Saint Petersburg

Business Enabling Environment

Saint Petersburg is in Russia's TOP-5 Regions
by Business Environment Score

5,6 mln
population

>130
support measures for investors

TOP-5

in the Science and Technology Development
Ranking of Russian Regions

₽ 1734,8 bn

invested in Saint Petersburg in 2025

Developed entrepreneurs support system

7 directions
for business support

Broad coverage of priority investment system



production section



transport



real estate activities



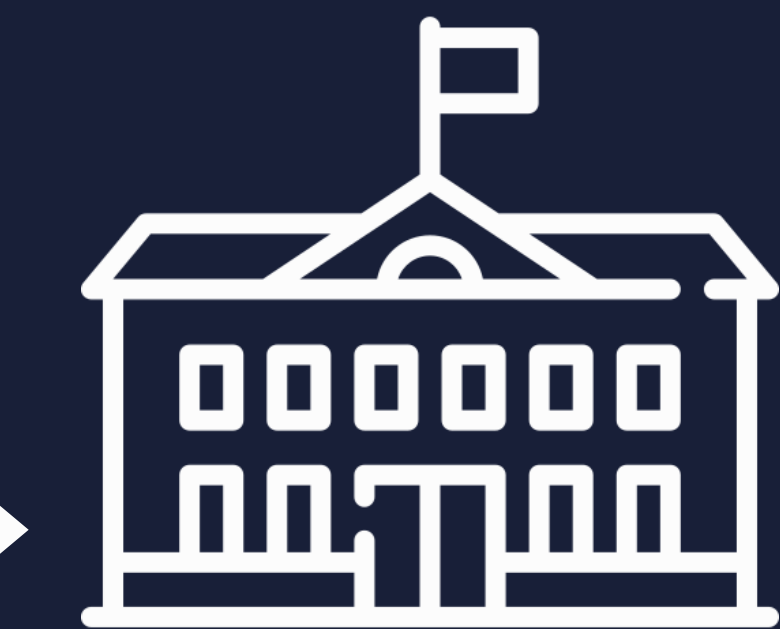
trade sector



construction sectors

Investment attractiveness

The Committee for Investment of Saint Petersburg implements public policy in the area of public-private partnerships

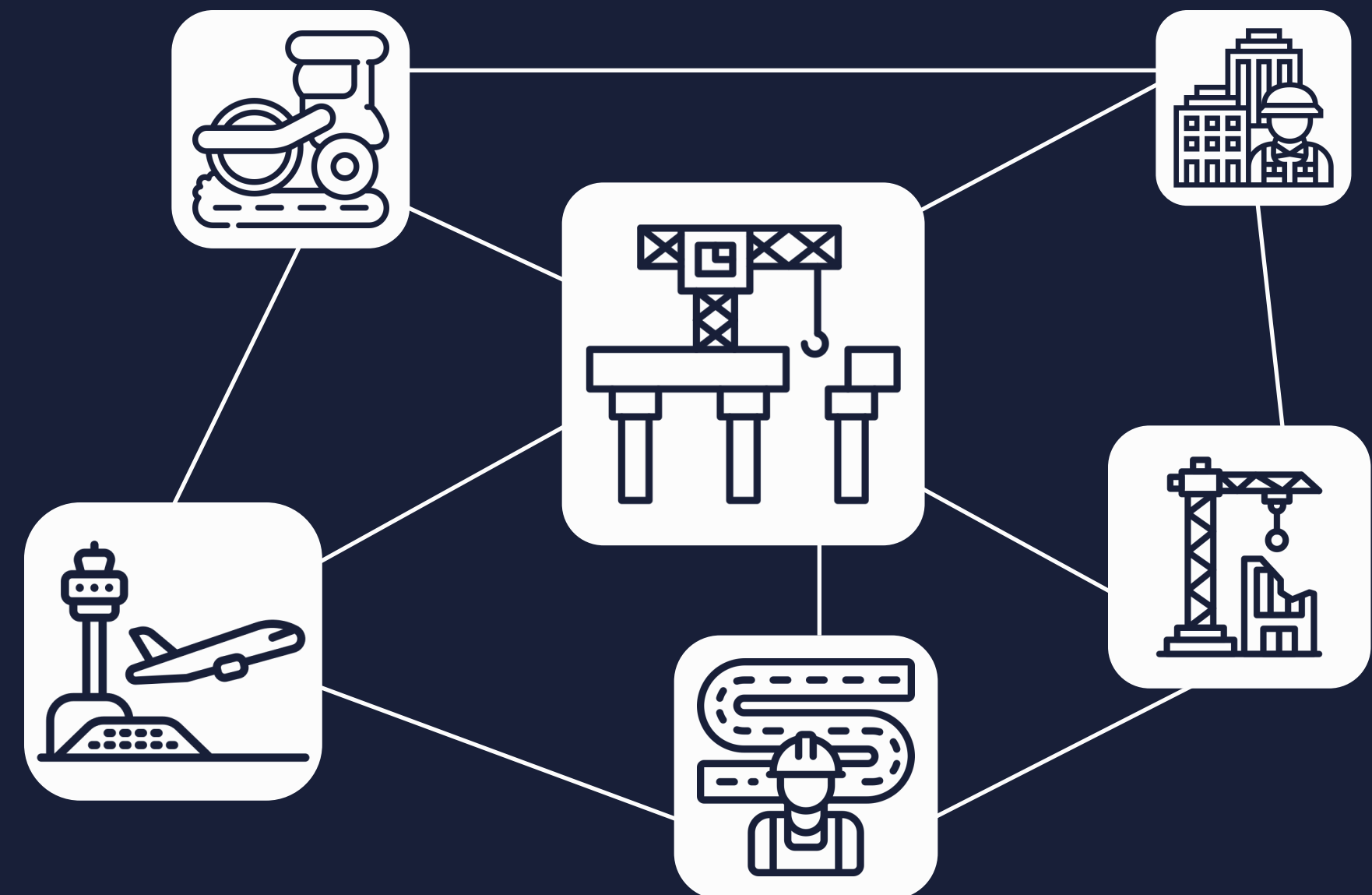


Government



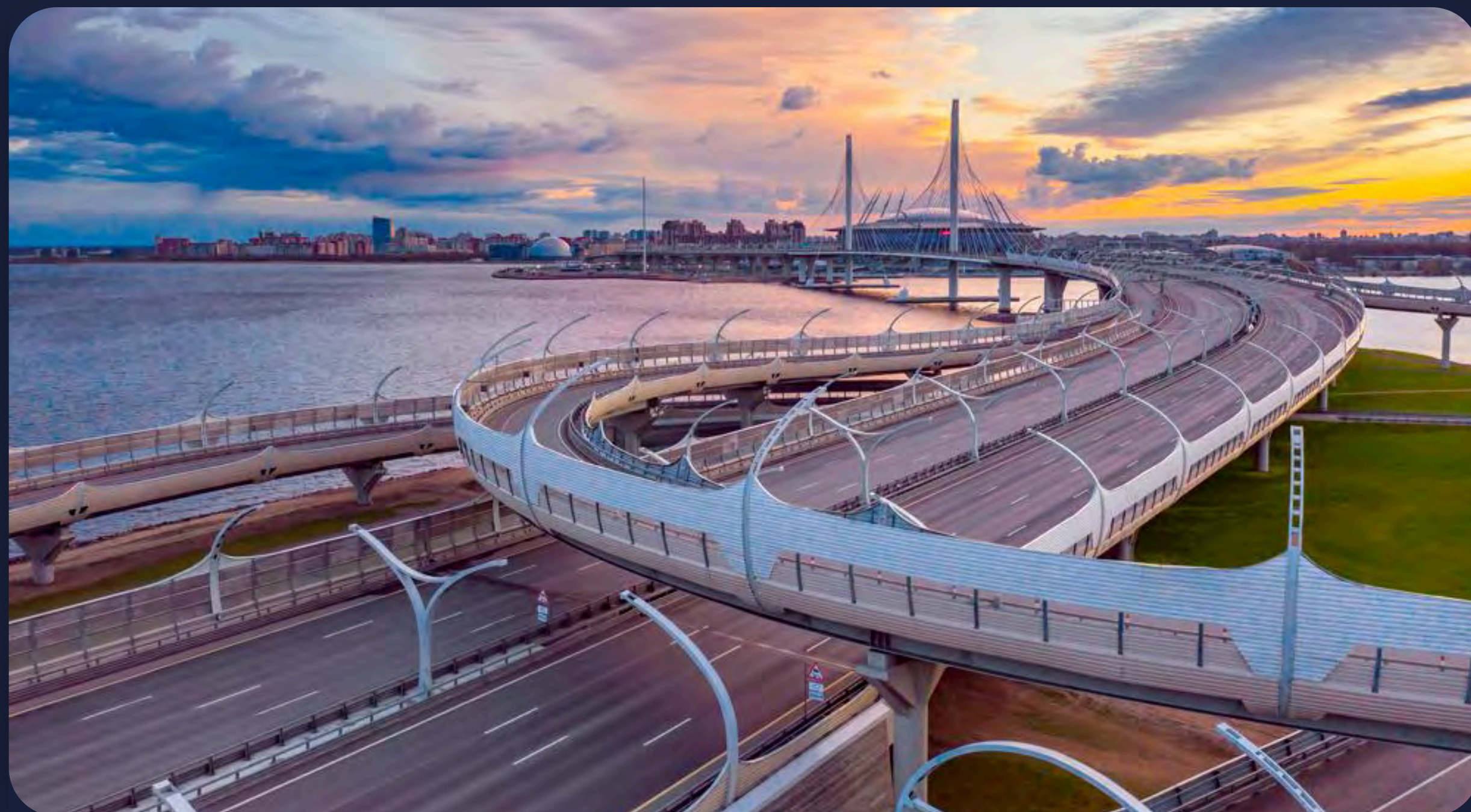
The Committee for Investment of Saint Petersburg

The Committee accompanies projects from concept to end of operation



Transport investment projects

On the principles of PPP in Saint Petersburg, the first modern toll highway in Russia - Western Speed Diameter was built. Active construction of new traffic interchanges (SCIA)



Western High-Speed Diameter highway (WHSD)

Number of transactions more than 100 mln. per year and up to 400 thousand per day



Latitude Highway (LHSD)

One of the main building blocks of urban highways for high-speed and low-speed traffic

Enhancing the integration of regions by means of the High-speed railway project. According to the plan of HSR will pass through 6 regions of the country (Petersburg, Leningrad region, Novgorod, Tver, Moscow region and Moscow)



High-speed railway

Will shorten the journey on the train between Moscow and Saint Petersburg to 2 hours 15 minutes

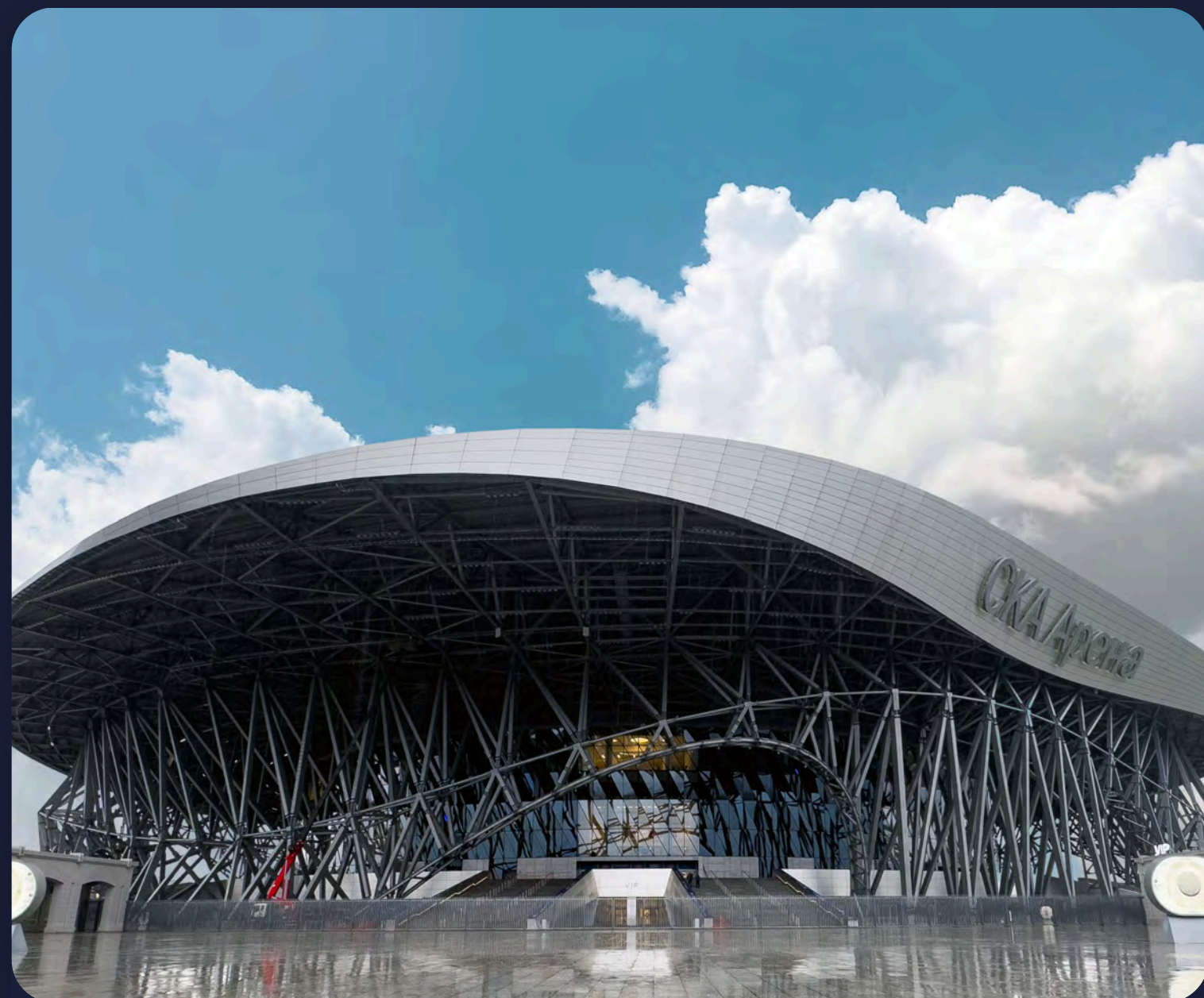


Pulkovo airport

Successfully developed on the basis of PPP. Second aviation hub in Russia by volume of passenger traffic

Tourist attraction

Saint Petersburg is one of the most promising partners for cooperation in tourism



SKA Arena

The largest ice stadium in the world with adaptable capacity: 21,500 for hockey and 23,000 for entertainment events



Lahta Center

The world's northernmost completed skyscraper, reaching an architectural height of 462 meter



«St. Petersburg Marina»

All-season resort for yachting enthusiasts a year-round. The estimated number of visitors is 1.33 million per year.

Strategic Investment Project

Support mechanism for investors in Saint Petersburg, designed to grant special status and benefits to the city's most socially and economically significant projects

Minimum Investment Volume:

- ✓ **₽750 mln+** for science, sports & entertainment
- ✓ **₽1 bn +** innovation, tourism & healthcare
- ✓ **₽2 bn +** industry and logistics
- ✓ **₽15 bn +** other types of projects

Socio-economic impact:

Improvement of living conditions the residents of Saint-Petersburg

Import Substitution:

Production using Russia n-made products and technologies

Mutual Benefit:

Advantage for both the investor the city, including profitability, payback period, and tax revenues

Investor Experience:

Implementation of similar projects within the past 10 years

Strategic Investment Project

ADVANTAGES

Provision of land plots owned by the state for lease without competitive bidding

Reduction of rent for land plots provided for construction to as low as 1.5% of their cadastral value

The option to purchase a land plot allocated for a specific purpose at a reduced price, and support for the investment project at all stages of implementation



Public-Private Partnership (PPP)

ADVANTAGES OF PUBLIC-PRIVATE PARTNERSHIP FOR INVESTORS:

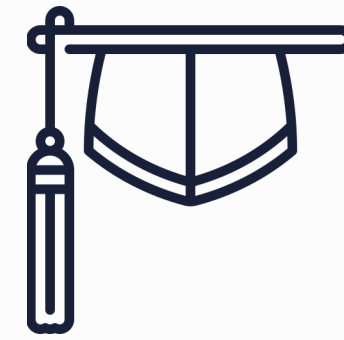
- ✓ cooperation with a public partner within long-term agreements;
- ✓ opportunity to obtain a land plot with no tendering processes in terms of public-private partnership agreement realization;
- ✓ opportunity of the project co-financing by the public partner and further assurance obtaining (including minimum profitability);
- ✓ opportunity to increase project revenue by providing of extra priced services and (or) applying various solutions to reduce costs at the stage of the project creation or its exploitation;
- ✓ project risks sharing between an investor and public partner;
- ✓ in case of private initiative – opportunity to work out the project structure and to present an agreement draft through its own effort.



Promising areas of cooperation



Infrastructure projects



Promotion of academic exchanges



Participation in forums



Cooperation in culture



Exchange of experience in the field of protection of historical and cultural heritage



Cooperation in tourism

St. Petersburg - City for business

1028,8
billion of rubles

Brings
St. Petersburg PIEF in 2025

67
agreements

Concluded
St.Petersburg, of which
more than 40 - investment

~500
billion of rubles

Agreement of the St.
Petersburg The Committee
for Investment



Contact Us

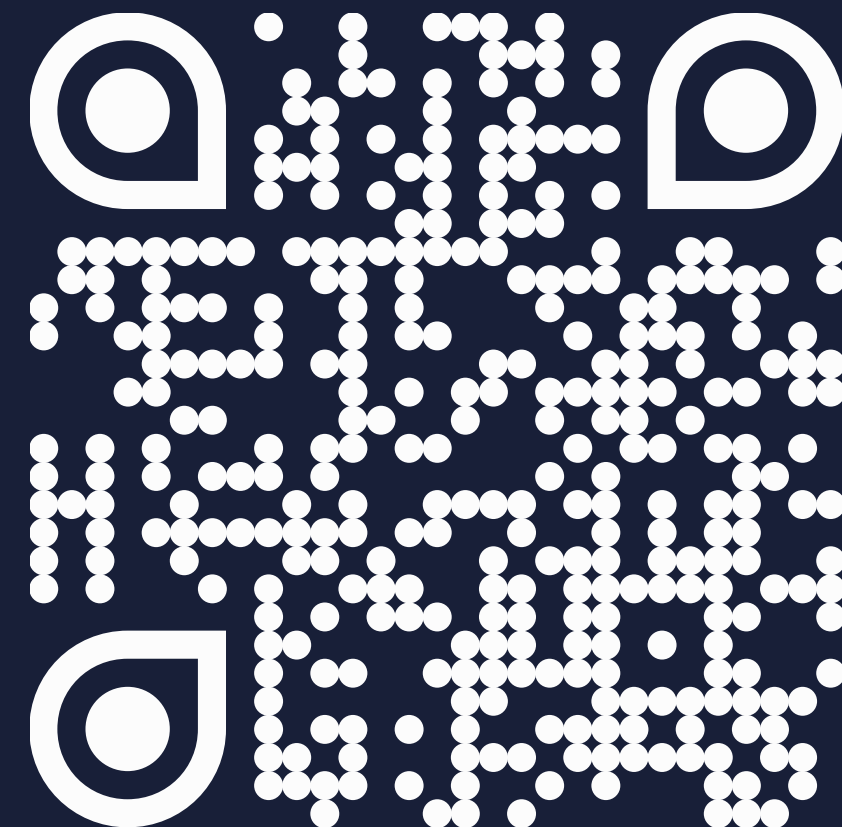
The Committee for Investment of Saint Petersburg

Lit. A, 20, Novgorodskaya Str. ("Nevskaya Ratusha"
Business Complex) 191144 Saint Petersburg

+7 (812) 576-60-41

info@cisp.gov.spb.ru

spbinvestment.ru



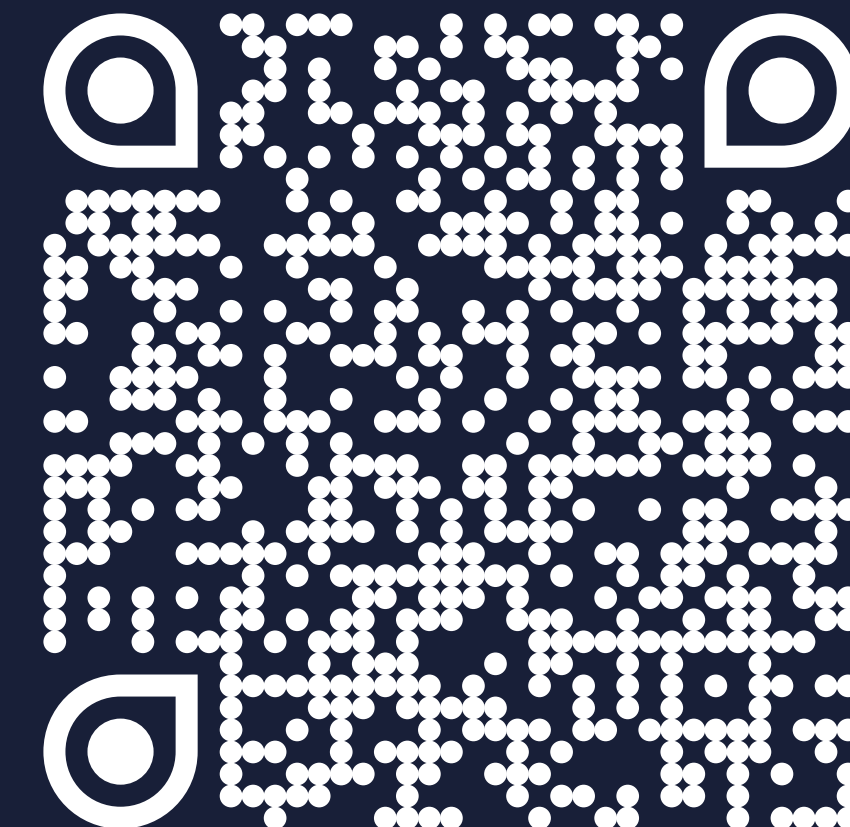
One-stop shop for investors

Lit. A, 20, Novgorodskaya Str. ("Nevskaya Ratusha"
Business Complex) 191144 Saint Petersburg

+7 (812) 246-16-61

info@stateinvest.spb.ru

spbinvestment.ru



I INVEST IN SPB

Thank you for attention!