



Introducing the Nature Based Tourism in Myanmar



Presented By

Mr. Zeyar Myo Aung

Deputy Director General

Ministry of Hotels and Tourism

The Republic of the Union of Myanmar



Content

- **A Brief Introduction of Nature based tourism opportunities in Myanmar**
- **Pristine Beaches and Islands**
- **Magnificent Mountains and Trekking**
- **Cultural Heritage and Historical Sites**
- **Wildlife and Biodiversity**
- **Community-Based Tourism Initiatives**



A Brief Introduction of Nature based tourism opportunities in Myanmar



Geography of Myanmar



Myanmar: It is situated in Southeast Asia

Bordered Countries: on the north and north-east by China, on the east and south-east by Laos and Thailand, on the south by the Andaman Sea and the Bay of Bengal and on the west by Bangladesh and India.

- **Population:** 55.95 million (2023)
- **Area:** 676,578 km² (261,228 square miles).
- **Climate:** Tropical monsoon; cloudy, rainy, hot, humid summers
- **Religions:** Buddhism, Christianity, Islam, Hinduism, Spiritualism and others.
- **Languages:** Burmese; Myanmar is a union of 135 ethnic groups, all with their own languages and dialects.
- **Currency:** Myanmar kyat (MMK)





Beaches and islands in Myanmar

Ngapali Beach



Ngapali Beach



Ngwe Saung Beach



Chaungtha Beach



Beaches and Islands in the Myeik Archipelago



Magnificent Mountains and Trekking



Chin Hill



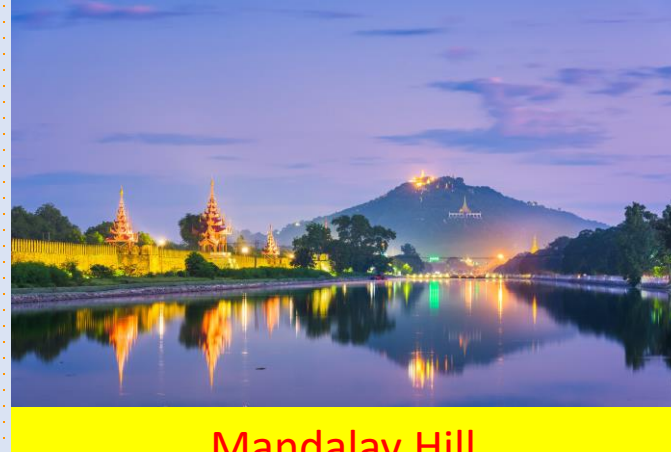
Shan Hill



Cultural Heritage and Historical Sites



Shwedagon Pagoda (Yangon)



Mandalay Hill



Mingun



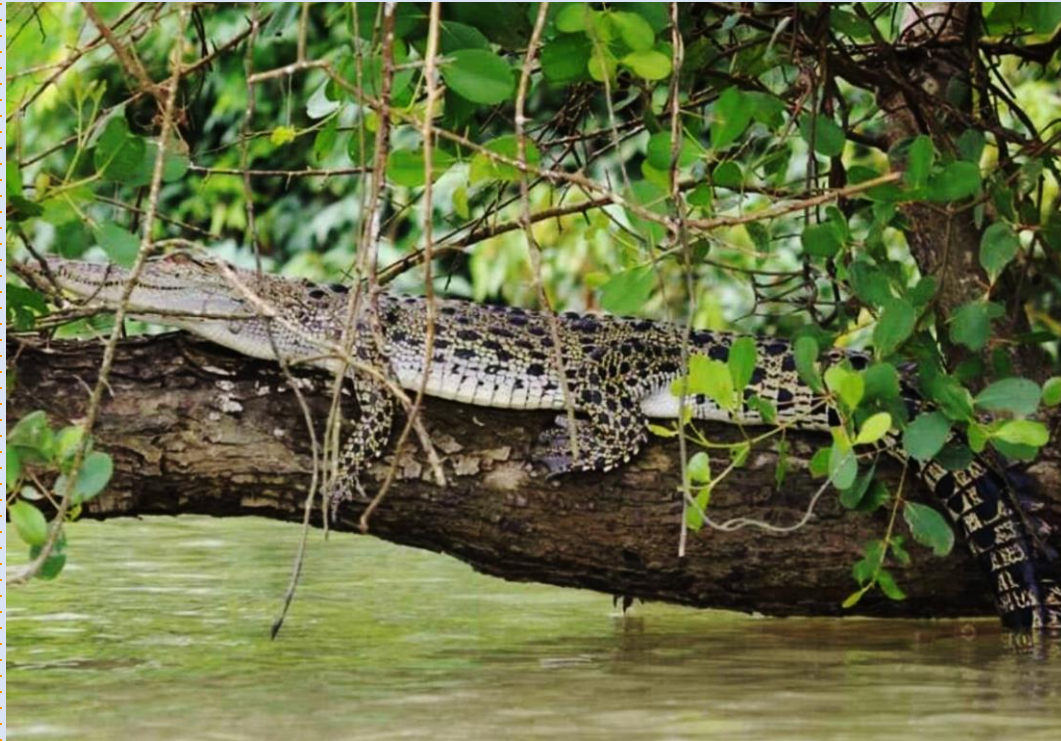
Golden Rock Pagoda



Panoramic view of Bagan



Wildlife and biodiversity





Community Based Tourism Initiatives





Thank you for your kind attention

